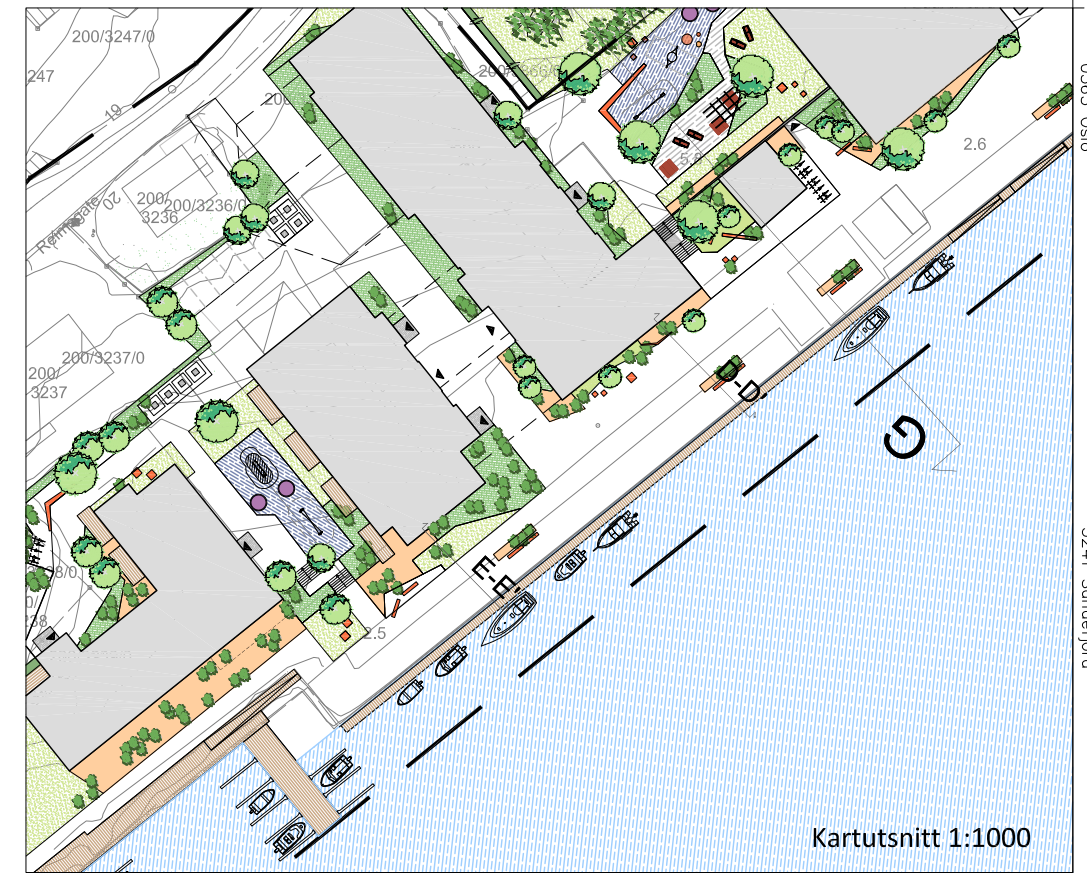
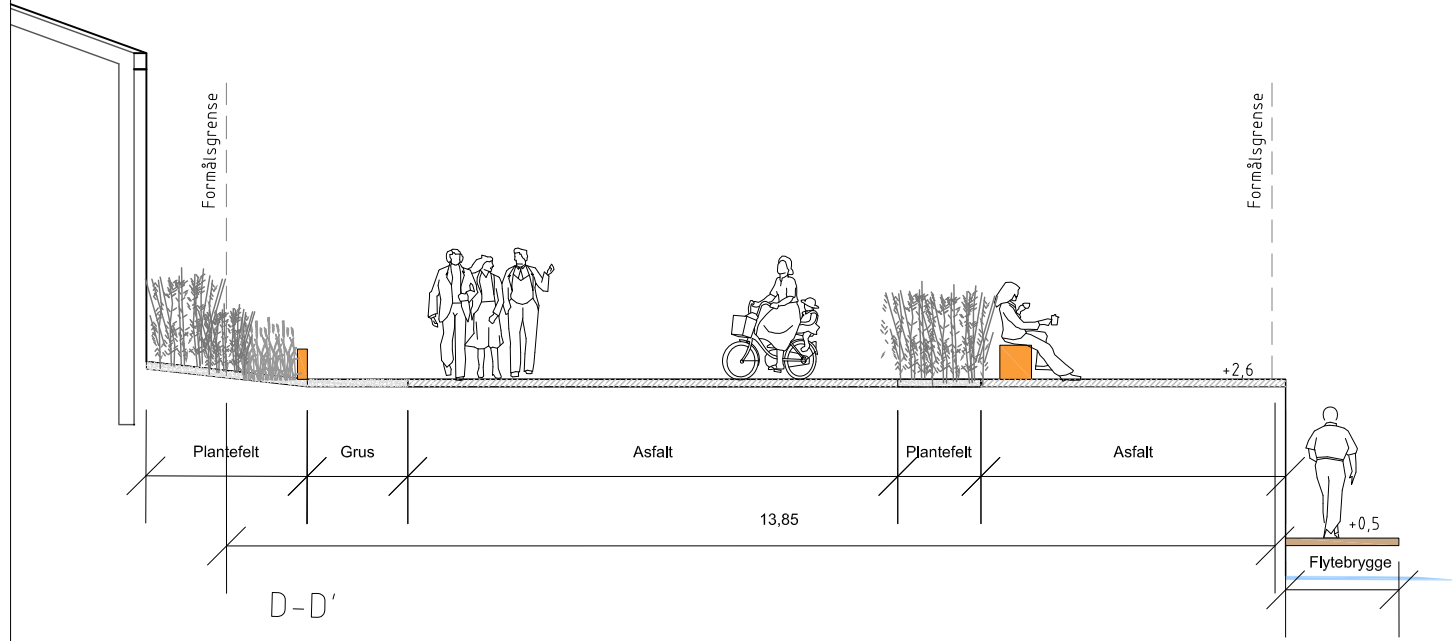
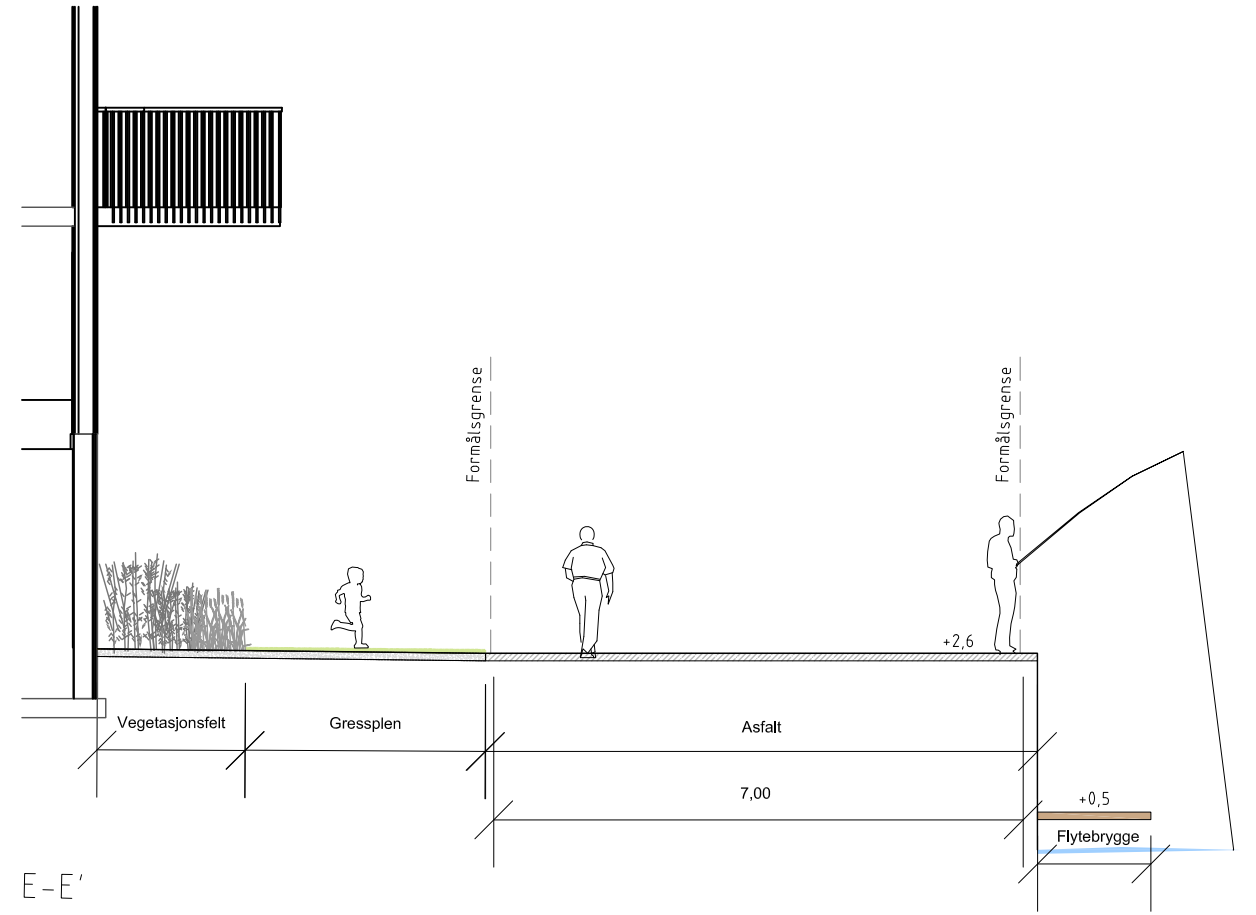


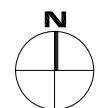
2323 PMV-tomta
L_201
Snitt havnepromenaden



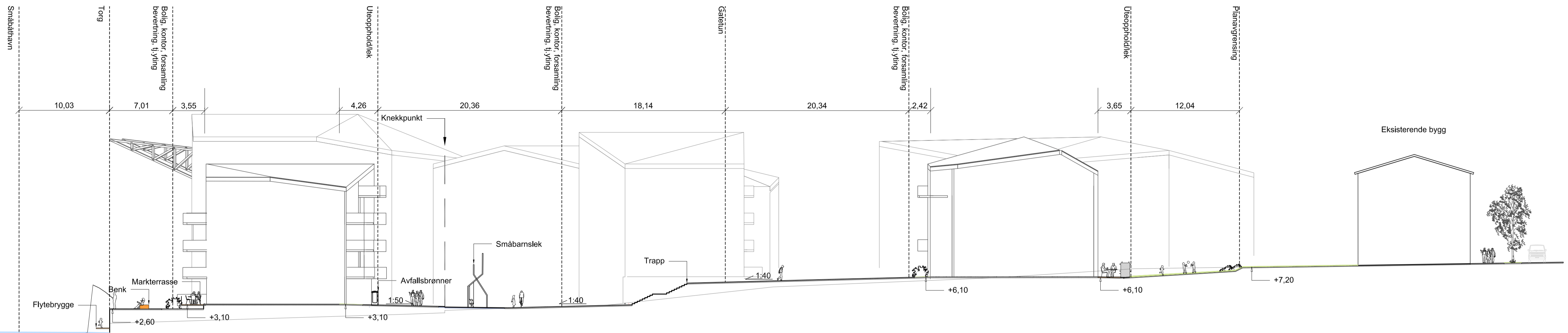
Målestokk 1:100
VB - 16.12.2019



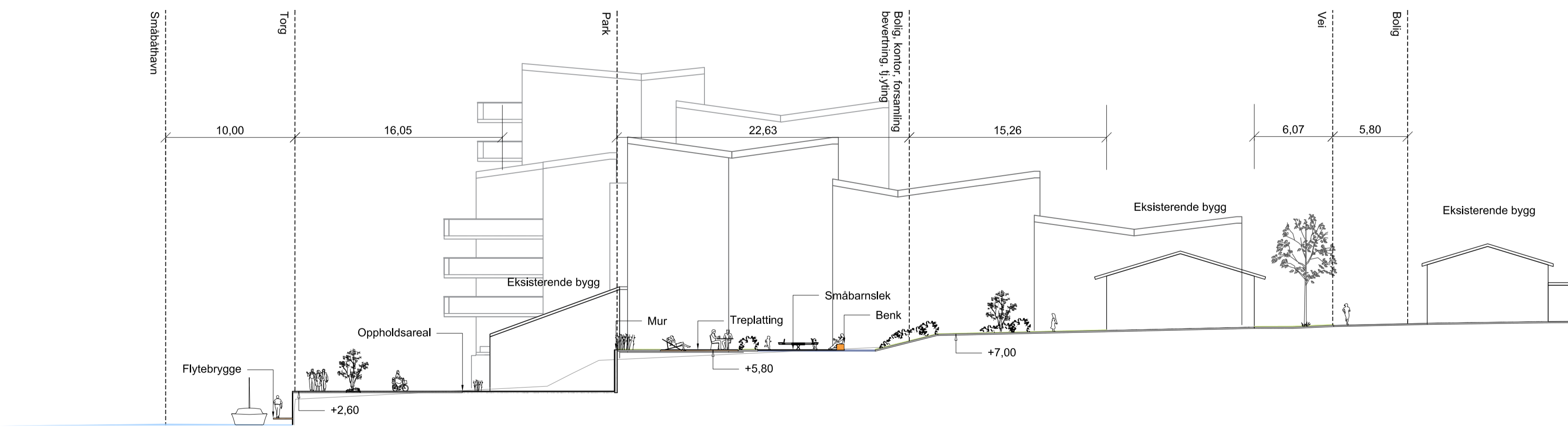
2323 PMV-tomta
L_202
Snitt havnepromenaden



Målestokk 1:100
VB - 16.12.2019



Snitt F-F'



Snitt G-G'



Rev.	Dato	Revisjonen gjelder	Tegn.	Kontr.
		Oppdragsgiver	Fase	
		Vestre Brygge Eiendom AS	FP	
Prosjektnavn			Prosjektnr.	
2323 PMV-tomta			2323	
Tegningsnavn			Målestokk	1:250/ A1 1:500/ A3
Snitt F og G			Dato	16.12.2019
			Tegn.	VB
			Kontr.	HB
Koordinat- og høydesystem				
Tegn.nr.				Rev.
L_203				.